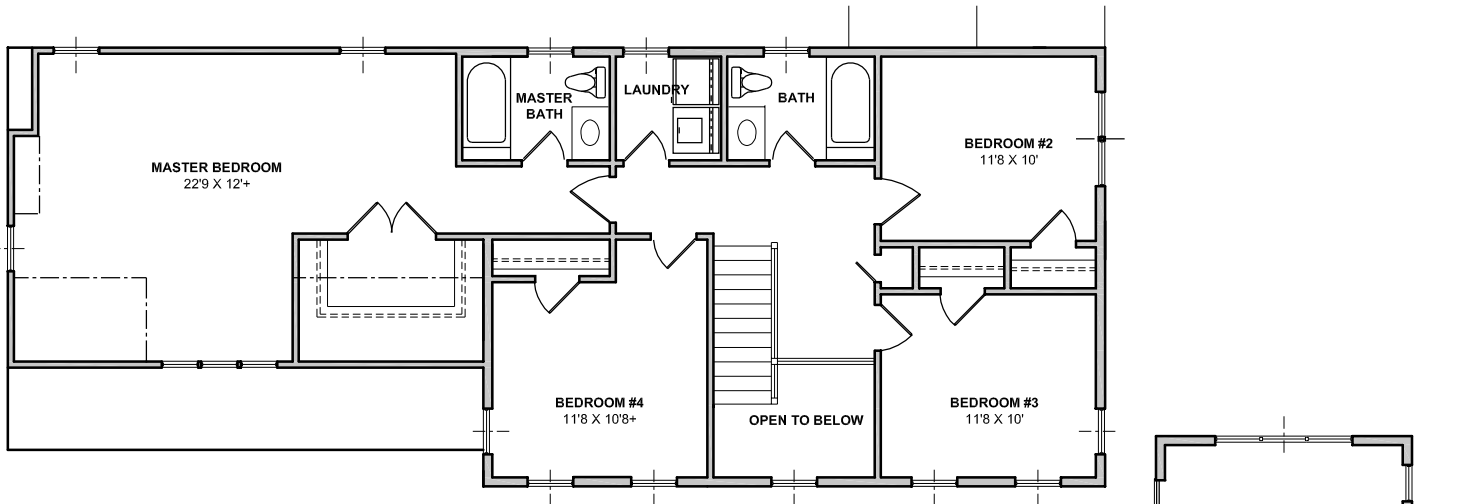


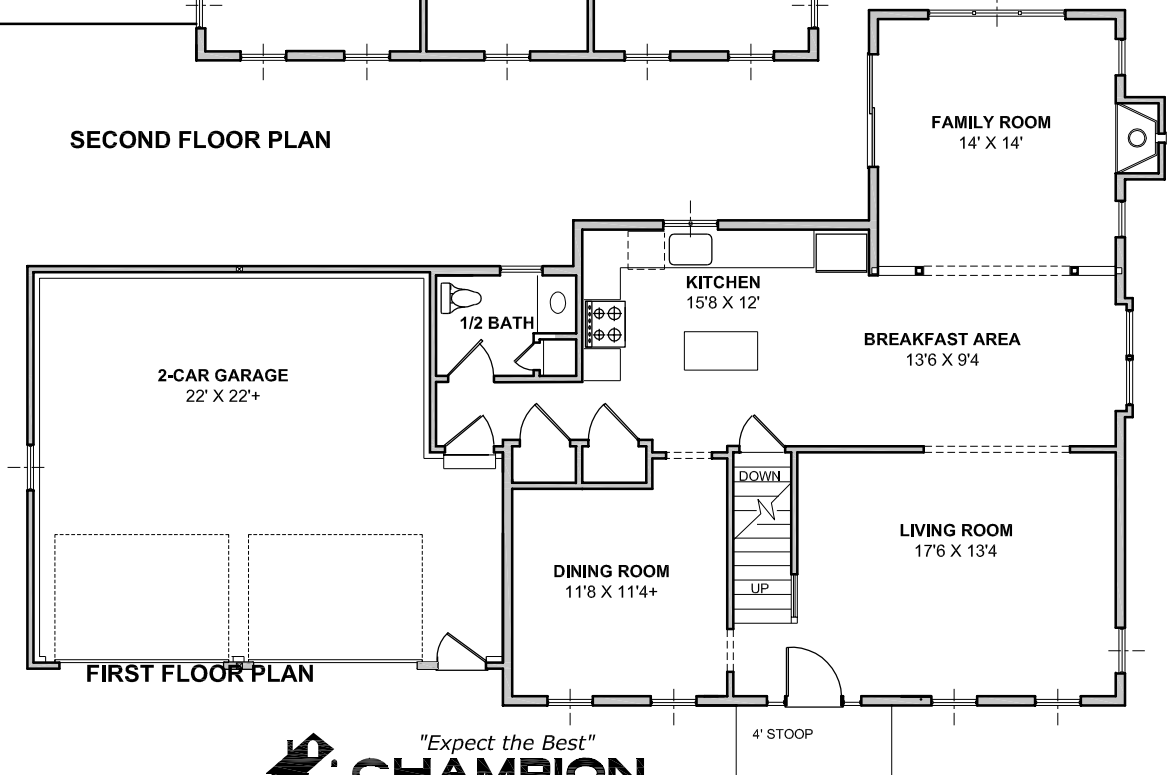
POCOMO III

4 BEDROOM, 2 1/2 BATH COLONIAL

2260 SF ATTACHED 2-CAR GARAGE 14' X 14' FAMILY ROOM



SECOND FLOOR PLAN



FIRST FLOOR PLAN



300 OAK STREET, SUITE 155A PEMBROKE MA 02359
(781) 826-3800 championbuilders.com